

Centre for healthcare  
**KNOWLEDGE & INNOVATION**  
COLLABORATE • LEARN • ADVANCE

**PRESENTS**

REVISITING ABORIGINAL WELLBEING

## A CELEBRATION OF REGIONAL PARTNERSHIPS

**18 & 19 FEBRUARY 2020**

**ANGOURIE RAINFOREST RESORT, ANGOURIE NSW**

Register at:

[www.thecentrehki.com.au/events/RAW-regional-partnerships](http://www.thecentrehki.com.au/events/RAW-regional-partnerships)

e: [coordinator@thecentrehki.com.au](mailto:coordinator@thecentrehki.com.au) p. 0437 027 751

This event is based upon the principal belief that Indigenous health must be approached from a holistic view, which encompasses body, mind and spirit.

The North Coast NSW programs showcased celebrate the strengths of our region and are built on social, emotional, spiritual and cultural wellbeing principles.



**EARLY BIRD RATE: \$125PP FOR BOTH DAYS + DINNER!**

We acknowledge the traditional custodians of the land we live and work, the Bundjalung, Arakwal, Yaegl, Gumbaynggirr, Githabul, Dunghutti and Birpai Nations and their continuing connection to land, sea and community. We pay our respects to elders past, present and future.

# DAY ONE - A CELEBRATION OF REGIONAL PARTNERSHIPS

PROGRAM

8:30AM - 4:30PM

## 8:30AM | WELCOME TO COUNTRY & SMOKING CEREMONY

Agal Yaluuwi Creations

An opportunity to welcome those from outside of Country, cleanse participants for new beginnings, ward off bad spirits and ground the conference in culture.

## 9:30AM | UNDERSTANDING OUR REGION

Marni Tuala, North Coast Primary Health Network

An opportunity to explore the North Coast NSW footprint and the countries and communities that sit within it.

## 9:40AM | GROWING SUPPORT FOR INDIGENOUS RECONCILIATION

Nadia Neal, UOW & Reconciliation Australia

A look at new reporting requirements and growing support for reconciliation and improved relationships between Aboriginal and Torres Strait Islander people and other Australians and how to harness the intention into action.

## 10:05AM | GROWING SUPPORT FOR COLLECTIVE ACTION

Zoe Knapp, Dept of Environment & Energy & Peter See, 10 Deserts Project

An introduction to partnering with Indigenous organisations and a case study from the 10 Deserts Project - the largest Indigenous-led conservation network on earth.

## 10:50AM | WHY TOGETHER IS BETTER

Panel discussion

A chance to explore different perspectives on partnering for better health outcomes on the North Coast.

## 11:20AM | CULTURALLY RESPONSIVE PARTNERSHIPS

Showcase of North Coast NSW programs

Get to know a range of North Coast NSW programs that address the cultural determinants of health. This showcase will explore 12 programs that address:

- Connection to land or country
- Connection to spirituality and ancestors
- Connection to family, kinship & community
- Connection to mind and body

As well as hear from those driving these programs there will be ample opportunity to explore poster presentations.

## 2:45PM | BUILDING ON WHAT WE HAVE

Open forum and Q&A

An opportunity to ask showcase presenters questions and reflect on our current programs. What's next? How do we build on our strengths and improve current services?

## 3:45PM | GETTING TO KNOW OUR SUPPORT

CATSINaM, IAHA, AH&MRC, SNAICC and NATSIHWA

An introduction to the supporting bodies and institutions that represent, advocates for and supports Aboriginal and Torres Strait Islander people.

Dinner from 6:00pm

## NETWORKING DINNER

6:00PM - 9:00PM

Join us for canapes and a sit down meal in the Cunjevoi Restaurant. Presentation from:

### **Rod Williams, Gnibi College of Indigenous Australian Peoples**

"How private enterprise, Indigenous communities and mainstream organisations can work together to bridge cultural divide."

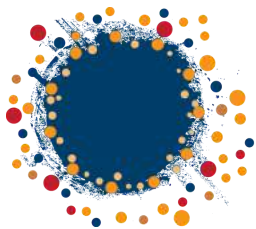
### **Kutcha Edwards (keynote) Indigenous Singer and Songwriter**

Kutcha Edwards uses music to create connections across cultures, generations, and spaces. With an innate ability to communicate, he uses his talents to nurture understanding and self-knowledge amongst all those with whom he has contact.

**Plus a dance performance from Aagal Yaluuwi Creations!**

---

**Make connections. Ask  
questions. Share ideas.**



Centre for healthcare  
**KNOWLEDGE & INNOVATION**  
COLLABORATE • LEARN • ADVANCE

**See conference  
packages for cost.**



# DAY TWO - BUILDING ON OUR STRENGTHS

PROGRAM

8:45AM - 4:30PM

## 8:45AM | YARNING CIRCLES

Storytime with local Elders

Aboriginal people have shared story for thousands of years. Listen to stories of ancestors journeys and learn about traditional cultural values.

## 10:00AM | WORKSHOP 1 - SELF REFLECTION PRACTICES

Indigenous Allied Health Association (IAHA)

Learn to undertake an ongoing process of self-reflection and cultural self-awareness to deliver and maintain safe, accessible, person-oriented and informed care.

## 11:10AM | RACISM AS A DETERMINANT OF HEALTH (KEYNOTE)

Yin Paradies, Deakin University

Yin Paradies examines associations between reported racism and health outcomes and how race and racism operate within the health system.

## 11:45AM | WORKSHOP 2 - THROUGH YOUNG BLACK EYES

Secretariat of National Aboriginal and Islander Child Care (SNAICC)

Discuss early intervention approaches that address the wellbeing of children - safety, health, culture and connections, mental health, home and environment, learning and skills, empowerment and economic wellbeing.

## 1:30PM | WORKSHOP 3 - QUALITATIVE RESEARCH PRACTICES

Aboriginal Health & Medical Research Council of NSW (AH&MRC)

An introductory session grounded in cultural competency - how to focus qualitative research practices that are culturally informed, trustworthy, rigorous and respectful of communities.

## 2:15PM | WORKSHOP 4 - MANAGING CULTURAL LOAD

National Aboriginal and Torres Strait Islander Health Worker Association (NATSIHWA)

How can the health sector make best use of the skills and contributions of Aboriginal Health Workers and Health Practitioners? Karl Briscoe offers an interactive look at making, developing and defining effectiveness and efficacy in services.

## 3:00PM | UNDERSTANDING TODAY, ENVISIONING TOMORROW

Julie Sturgess, North Coast Primary Health Network (NCPHN)

Like many other North Coast providers, North Coast Primary Health Network envisions a better future for Indigenous people. In this closing session, CEO Julie Sturgess reflects on the health needs in our region and the quest to integrate health care services - placing patient experience and wellbeing at the centre.

## 3:30PM MARKETPLACE & NETWORKING

At leisure

Help yourself to afternoon tea and network with your colleagues and peers while browsing a range of stalls and service flyers.

REGISTER BEFORE 31 JANUARY AND ATTEND BOTH  
DAYS AND THE DINNER FOR JUST \$125.00pp

# MEET YOUR FACILITATOR

## PROFESSOR KERRY ARABENA

Managing Director, Karabena Consultancy



A descendant of the Meriam people from the Torres Strait, Kerry's work has brought her to the forefront of Indigenous affairs in Australia. A former social worker with a Doctorate in Environmental Science, Kerry has held senior positions including Chair of Indigenous Health at the University of Melbourne, Executive Director of First 1000 Days Australia, CEO of the Lowitja Institute, and Director of Indigenous Health Research at Monash University.

Kerry has recently developed a cultural determinants of health framework with a view to building practical and applicable solutions into the next iteration of the National Aboriginal and Torres Strait Islander Health Implementation Plan.

# MEET THE CENTRE



The Centre for Healthcare Knowledge & Innovation aims to drive integrated care on the North Coast by developing local knowledge of the ideas and technologies shaping the future of health and social care. The Centre aims to:

- Stimulate innovation and the development of system integration solutions
- Provide opportunities for cross-sector networking and collaboration
- Support the local workforce to adopt new technologies and translate knowledge into practice
- Bring local leadership together to drive reform and impact the social determinants of health
- Disseminate best national/international practice and research to elevate local approaches to prevention

# CONFERENCE PRICES \*

DAY ONE: \$60pp

DAY TWO: \$60pp

BOTH DAYS: \$110pp

DINNER: \$50pp

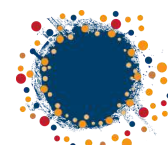
BOTH DAYS + DINNER: \$150

EARLY BIRD - register before 31 January 2020 and save!

\*Registration fee subsidised by Centre partners

REGISTER AT:

[www.thecentrehki.com.au/events/RAW-regional-partnerships](http://www.thecentrehki.com.au/events/RAW-regional-partnerships)



Centre for healthcare  
**KNOWLEDGE & INNOVATION**  
COLLABORATE • LEARN • ADVANCE